

ZINC END-USE STATISTICS¹
U.S. GEOLOGICAL SURVEY

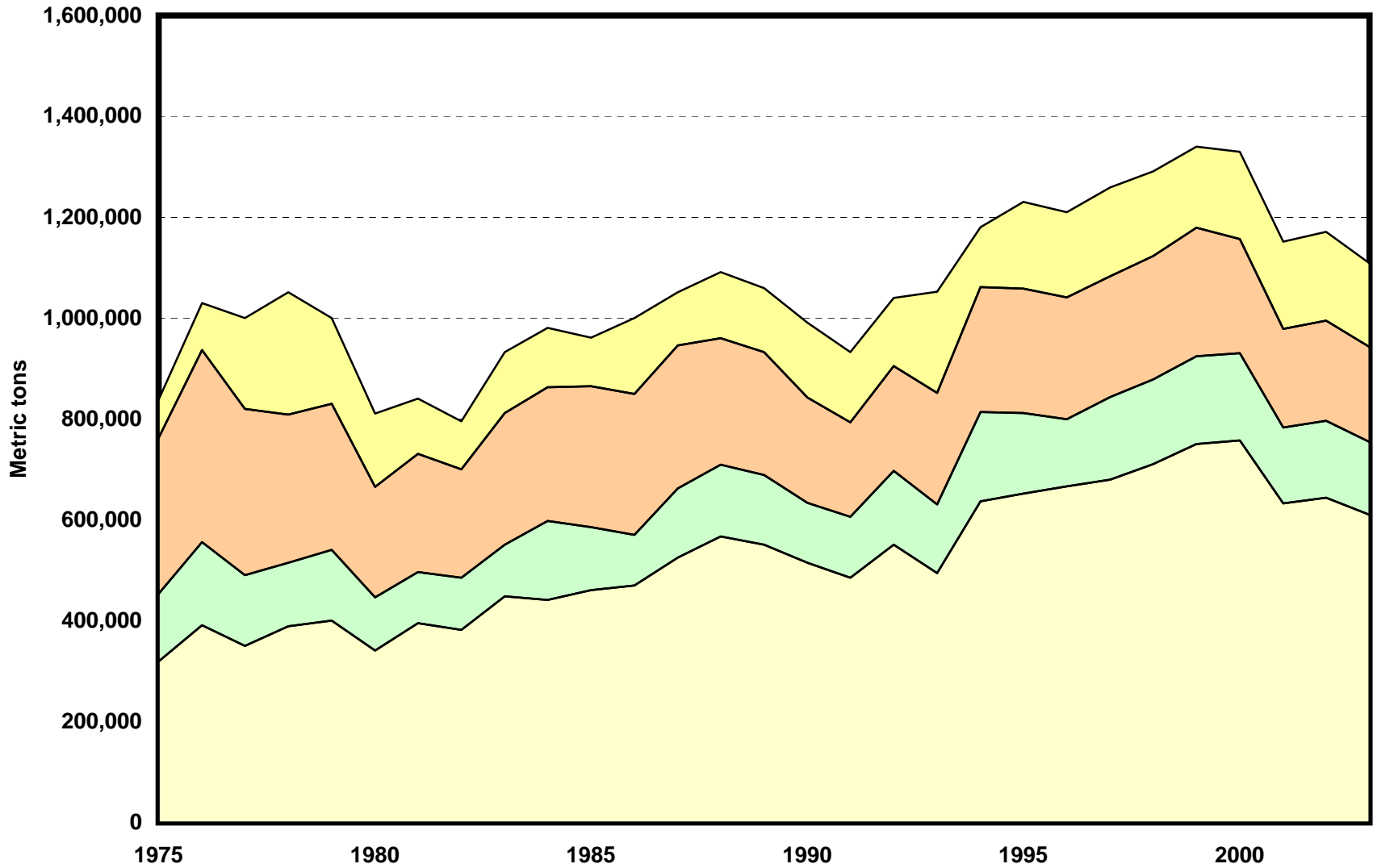
[Metric tons]

Last modification: September 1, 2005

Year	Galvanizing	Brass and bronze	Zinc-base alloys	Other	Apparent consumption
1975	319,000	134,000	310,000	75,500	839,000
1976	391,000	165,000	381,000	92,700	1,030,000
1977	350,000	140,000	330,000	180,000	1,000,000
1978	389,000	126,000	294,000	242,000	1,050,000
1979	400,000	140,000	290,000	170,000	1,000,000
1980	341,000	105,000	219,000	146,000	811,000
1981	395,000	101,000	235,000	109,000	841,000
1982	382,000	103,000	215,000	95,400	795,000
1983	448,000	103,000	261,000	121,000	933,000
1984	441,000	157,000	265,000	118,000	980,000
1985	461,000	125,000	279,000	96,100	961,000
1986	470,000	99,900	280,000	150,000	999,000
1987	525,000	137,000	284,000	105,000	1,050,000
1988	567,000	142,000	251,000	131,000	1,090,000
1989	551,000	138,000	244,000	127,000	1,060,000
1990	515,000	119,000	208,000	149,000	991,000
1991	485,000	121,000	187,000	140,000	933,000
1992	551,000	146,000	208,000	135,000	1,040,000
1993	494,000	137,000	221,000	200,000	1,050,000
1994	637,000	177,000	248,000	118,000	1,180,000
1995	652,000	160,000	246,000	172,000	1,230,000
1996	666,000	133,000	242,000	169,000	1,210,000
1997	680,000	164,000	239,000	176,000	1,260,000
1998	710,000	168,000	245,000	168,000	1,290,000
1999	750,000	174,000	255,000	161,000	1,340,000
2000	758,000	173,000	226,000	173,000	1,330,000
2001	633,000	150,000	196,000	173,000	1,150,000
2002	644,000	152,000	199,000	176,000	1,170,000
2003	610,000	144,000	189,000	166,000	1,110,000

¹Compiled by G.R. Matos, J. Plachy, and P.N. Gabby.

End Uses of Zinc



Galvanizing Brass and bronze Zinc-base alloys Other

Zinc End-Use Worksheet Notes

Data Sources

The sources of data for the zinc end-use worksheet are the Commodity Data Summaries and the Mineral Commodity Summaries, annual mineral statistics publications of the U.S. Bureau of Mines and the U.S. Geological Survey.

End Use

End use is defined as the use of the mineral commodity in a particular industrial sector or product. End-use estimates are derived by applying the reported percentages of end-use consumption to the calculated U.S. apparent consumption. Actual consumption may be greater. For zinc, end-use categories are galvanizing, brass and bronze, zinc-base alloys, and other industrial uses.

The percentage distribution for end uses of zinc was not available for the year 1975; therefore the percentage distribution for 1976 was used as an approximation.

Data are rounded to no more than three significant digits; data may not add to totals shown.

References

U.S. Bureau of Mines, 1975–77, Commodity Data Summaries, 1975–77.

U.S. Bureau of Mines, 1978–95, Mineral Commodity Summaries, 1978–95.

U.S. Geological Survey, 1997–2004, Mineral Commodity Summaries, 1997–2004.

U.S. Geological Survey and U.S. Bureau of Mines, 1996, Mineral Commodity Summaries, 1996.

Recommended Citation Format:

(1) If taken from CD version:

U.S. Geological Survey, [year of last update, e.g., 2005], [Mineral commodity, e.g., Gold] statistics, *in* Kelly, T.D., and Matos, G.R., comps., Historical statistics for mineral and material commodities in the United States: U.S. Geological Survey Data Series 140, one CD-ROM. (Also available online at <http://pubs.usgs.gov/ds/2005/140/>.)

(2) If taken from online version:

U.S. Geological Survey, [year of last update, e.g., 2005], [Mineral commodity, e.g., Gold] statistics, *in* Kelly, T.D., and Matos, G.R., comps., Historical statistics for mineral and material commodities in the United States: U.S. Geological Survey Data Series 140, available online at <http://pubs.usgs.gov/ds/2005/140/>. (Accessed [date].)

For more information, please contact:

[USGS Zinc Commodity Specialist](#)