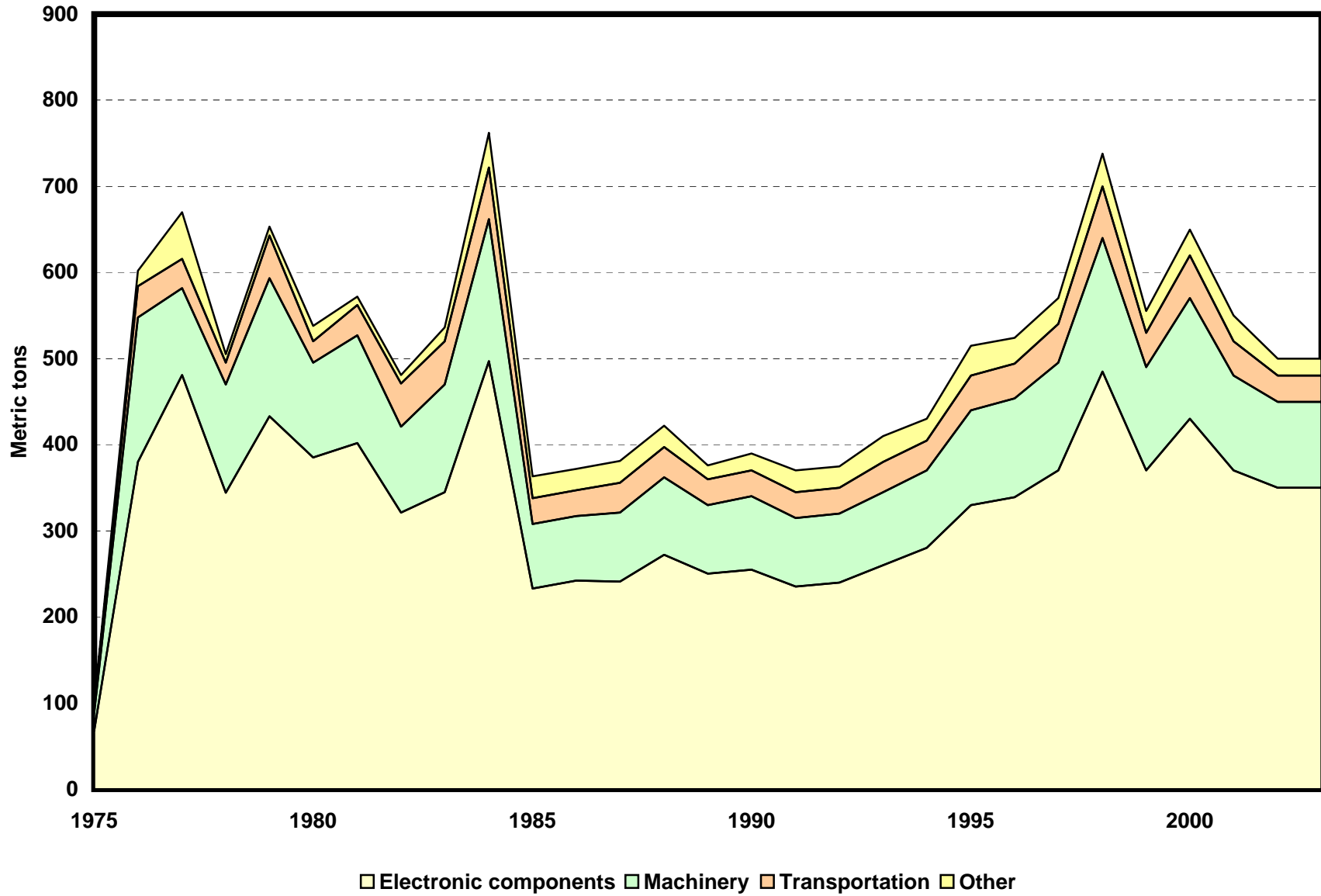


TANTALUM END-USE STATISTICS¹
U.S. GEOLOGICAL SURVEY
 [Metric tons of tantalum content]
 Last modification: September 1, 2005

Year	Electronic components	Machinery	Transportation	Other	Apparent consumption
1975	68	21	8	3	100
1976	380	168	36	18	602
1977	481	101	34	54	670
1978	344	126	25	10	505
1979	433	160	50	10	653
1980	385	110	25	18	538
1981	402	125	35	10	572
1982	321	100	50	10	481
1983	345	125	50	16	536
1984	497	165	60	40	762
1985	233	75	30	25	363
1986	242	75	30	25	372
1987	241	80	35	25	381
1988	272	90	35	25	422
1989	250	80	30	16	376
1990	255	85	30	20	390
1991	235	80	30	25	370
1992	240	80	30	25	375
1993	260	85	35	30	410
1994	280	90	35	25	430
1995	330	110	40	35	515
1996	339	115	40	30	524
1997	370	125	45	30	570
1998	485	155	60	38	738
1999	370	120	40	25	555
2000	430	140	50	30	650
2001	370	110	40	30	550
2002	350	100	30	20	500
2003	350	100	30	20	500

¹Compiled by G.R. Matos, L.D. Cunningham, and M.J. Magyar.

End Uses of Tantalum



Tantalum End-Use Worksheet Notes

Data Source

The source of data for the tantalum end-use worksheet is the Mineral Commodity Summaries, an annual mineral statistics publication of the U.S. Bureau of Mines and the U.S. Geological Survey.

End Use

End use is defined as the use of the mineral commodity in a particular industrial sector or product. End-use data are derived by applying estimated percentages of end-use consumption to estimated U.S. apparent consumption; actual consumption may be greater. End-use categories are electronic components, machinery, transportation, and other industrial uses.

Data were not available for the year 2003; end uses were estimated using the same percentage distribution as reported in 2002.

References

U.S. Bureau of Mines, 1980–95, Mineral Commodity Summaries, 1980–95.

U.S. Geological Survey, 1997–2005, Mineral Commodity Summaries, 1997–2005.

U.S. Geological Survey and U.S. Bureau of Mines, 1996, Mineral Commodity Summaries, 1996.

Recommended Citation Format:

(1) If taken from CD version:

U.S. Geological Survey, [year of last update, e.g., 2005], [Mineral commodity, e.g., Gold] statistics, *in* Kelly, T.D., and Matos, G.R., comps., Historical statistics for mineral and material commodities in the United States: U.S. Geological Survey Data Series 140, one CD-ROM. (Also available online at <http://pubs.usgs.gov/ds/2005/140/>.)

(2) If taken from online version:

U.S. Geological Survey, [year of last update, e.g., 2005], [Mineral commodity, e.g., Gold] statistics, *in* Kelly, T.D., and Matos, G.R., comps., Historical statistics for mineral and material commodities in the United States: U.S. Geological Survey Data Series 140, available online at <http://pubs.usgs.gov/ds/2005/140/>. (Accessed [date].)

For more information, please contact:

[USGS Tantalum Commodity Specialist](#)