

Mineral Industry Surveys

For information, contact:

Christine L. Thomas, Zinc Commodity Specialist
 National Minerals Information Center
 U.S. Geological Survey
 989 National Center
 Reston, VA 20192
 Telephone: (703) 648-7713 Fax: (703) 648-7757
 Email: clthomas@usgs.gov

Hodan A. Fatah (Data)
 Telephone: (703) 648-4971
 Fax: (703) 648-7975
 Email: hfatah@usgs.gov

Internet: <http://minerals.usgs.gov/minerals/>

ZINC IN OCTOBER 2017

Domestic mine production (recoverable) of zinc in October 2017 was 73,700 metric tons (t) (tables 1, 2). Average daily mine production in October was 2,380 t, 13% more than that in September and 5% more than that in October 2016 (fig. 1).

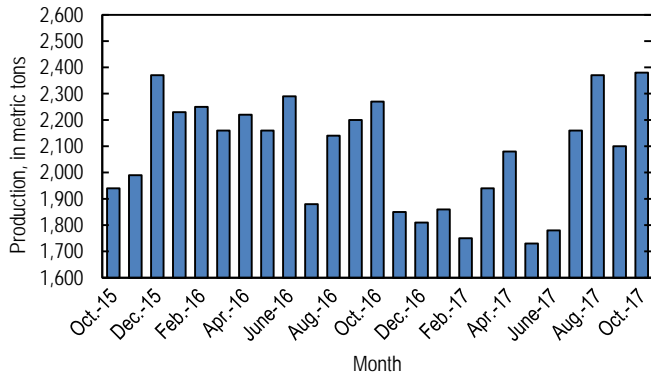


Figure 1. Average daily domestic zinc mine production (recoverable) from October 2015 through October 2017. Source: U.S. Geological Survey.

Global London Metal Exchange Ltd. (LME) stocks of Special High Grade (SHG) zinc were 254,025 t in October, essentially unchanged from stocks at the end of September 2017 and 44% less than stocks at the end of October 2016 (fig. 2, table 7).

The monthly average Platts Metals Week North American SHG zinc price in October 2017 was \$1.57 per pound, 5% more from that in September 2017 and 41% more than that in October 2016. The October 2017 average LME cash price for SHG zinc was \$3,273.52 per metric ton, 5% more than that in the previous month and 41% more than that in October 2016.

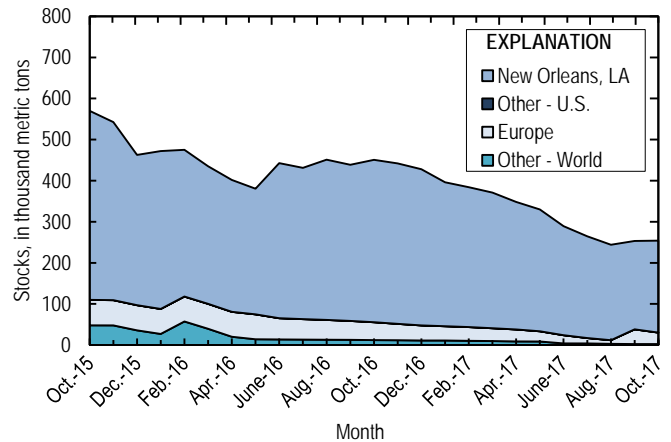


Figure 2. Global LME stocks of Special High Grade zinc, monthend, from October 2015 through October 2017. Source: London Metal Exchange Ltd.

The North American premium to the LME cash price in October averaged about 8.52 cents per pound, essentially unchanged from that in September and 36% more than that in October 2016 (fig. 3, table 6).

Update

On November 25, the 9-month long strike at Noranda Income Fund’s zinc processing facility in Salaberry-de-Valleyfield, Quebec, Canada, ended after unionized workers voted in favor of a new collective agreement (Dent, 2017).

Reference Cited

Dent, Millicent, 2017, NIF, union reach deal; 9-month strike ends: American Metal Market, November 27. (Accessed November 30, 2017, via <http://www.amm.com/>.)

List services and web feed subscribers are the first to receive notification of USGS minerals information publications and data releases. For information on how to subscribe, go to <http://minerals.usgs.gov/minerals/>.

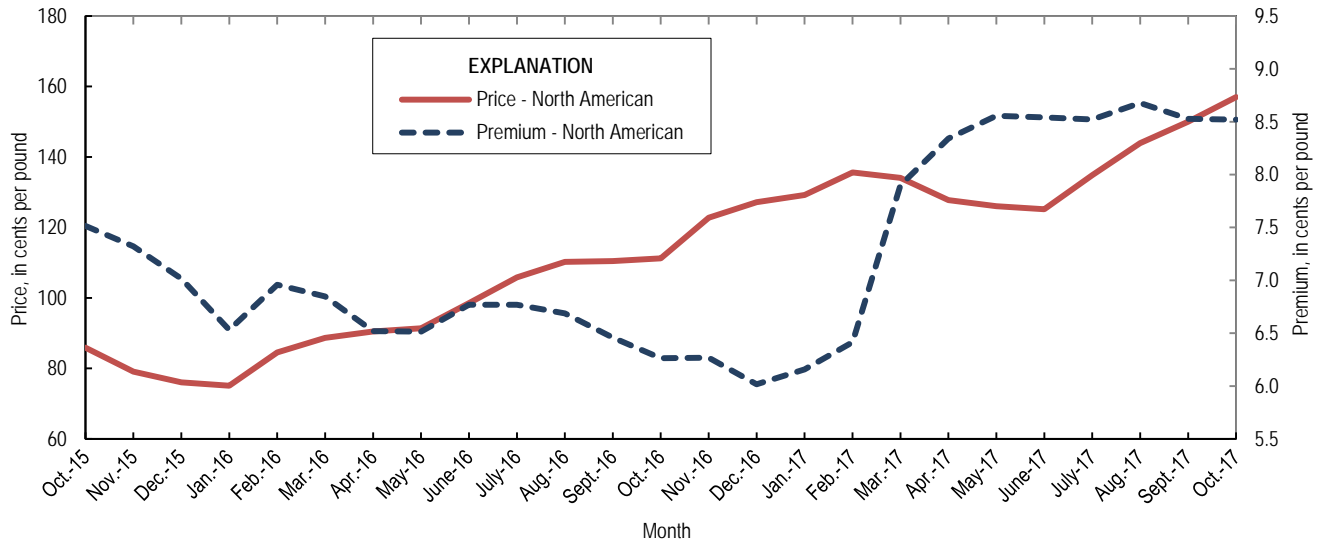


Figure 3. Average monthly North American price and premium for Special High Grade zinc from October 2015 through October 2017. Source: Platts Metals Week.

TABLE 1
SALIENT ZINC STATISTICS¹

(Metric tons, unless otherwise specified)

	2016	2017		
	January– December ^p	September	October	January– October ²
Production:				
Mine, zinc content of concentrate ³	805,000	65,000 ^r	76,200	634,000
Mine, recoverable zinc ³	778,000	62,900 ^r	73,700	613,000
Smelter, refined zinc ^e	126,000	9,920	9,920	106,000
Consumption of refined zinc, apparent ⁴	792,000	57,600	66,500	698,000
Imports for consumption:				
Ore and concentrate (zinc content)	60	--	--	6,780
Refined zinc	713,000	49,600	58,000	619,000
Exports:				
Ore and concentrate (zinc content)	597,000	136,000	63,300	620,000
Refined zinc	46,900	1,990	1,480	27,300
Price:⁵				
London Metal Exchange cash, average, dollars per metric ton	2,090.34	3,119.18	3,273.52	2,829.46
Platts Metals Week North American, average, cents per pound	101.37	150.01	157.00	136.36

^eEstimated. ^pPreliminary. ^rRevised. -- Zero.

¹Data are rounded to no more than three significant digits, except prices; may not add to totals shown.

²May include revisions to previously published data.

³Reported zinc content in both zinc and lead concentrates.

⁴Smelter production plus imports for consumption minus domestic exports.

⁵Special High Grade Zinc.

TABLE 2
MINE AND SMELTER PRODUCTION OF ZINC
IN THE UNITED STATES¹

(Metric tons)

Period	Mine ²		Smelter ^e
	Zinc content	Recoverable	
2016:			
October	72,700	70,300	11,300
November	57,400	55,500	11,300
December	58,100	56,200	11,300
January–December	805,000	778,000	126,000
2017:			
January	59,600	57,700	10,900
February	50,700	49,100	10,900
March	62,100	60,000	10,900
April	64,400	62,400	11,300
May	55,600	53,700	11,300
June	55,200	53,400	11,300
July	69,300 ^r	67,000 ^r	9,920
August	76,000 ^r	73,500 ^r	9,920
September	65,000 ^r	62,900 ^r	9,920
October	76,200	73,700	9,920
January–October	634,000	613,000	106,000

^eEstimated. ^rRevised.

¹Data are rounded to no more than three significant digits; may not add to totals shown.

²Includes the zinc content in both lead and zinc concentrates.

TABLE 3
U.S. IMPORTS FOR CONSUMPTION OF ZINC¹

(Gross weight, unless otherwise specified)

Material	2016		2017			
	Quantity (metric tons)	Value (thousands)	October		January–October ²	
			Quantity (metric tons)	Value (thousands)	Quantity (metric tons)	Value (thousands)
Ore and concentrate (zinc content)	60	\$15	--	--	6,780	\$14,900
Unwrought:						
Refined zinc	713,000	1,500,000	58,000	\$169,000	619,000	1,700,000
Zinc alloys	7,570	15,600	963	3,240	7,210	20,800
Wrought:						
Bars, rods, profiles, wire	2,740	8,370	303	1,220	2,390	9,140
Plates, sheets, strip, foil	3,650	12,000	264	1,010	3,310	13,200
Ash and residues:						
Hard zinc spelter	247	392	--	--	190	344
Zinc dross and skimmings	3,770	5,620	501	938	5,470	10,100
Other (zinc content)	1,180	886	38	22	1,480	829
Other:						
Powders, flakes, dust	27,800	85,400	2,290	8,470	23,200	82,600
Waste and scrap	11,300	12,800	1,140	2,100	9,190	16,600
Chemicals:						
Lithopone	2,670	6,310	47	196	1,860	1,690
Zinc oxide	123,000	239,000	9,950	27,000	96,400	246,000
Zinc chloride	137	1,290	25	215	162	1,400
Zinc sulfate	79,900	60,400	15,200	13,700	77,000	71,700
Zinc sulfide	579	1,600	138	635	1,760	5,280

-- Zero.

¹Data are rounded to no more than three significant digits.

²May include revisions to previously published data.

Source: U.S. Census Bureau.

TABLE 4
U.S. IMPORTS OF ZINC, BY TYPE OF MATERIAL AND COUNTRY OR LOCALITY¹

(Metric tons, gross weight, unless otherwise specified)

Material and country or locality	General imports			Imports for consumption		
	2016	2017		2016	2017	
		October	January–October ²		October	January–October ²
Ore and concentrate (zinc content):						
Canada	--	--	23	--	--	23
Japan	10	--	--	10	--	--
Korea, Republic of	50	--	--	50	--	--
Peru	--	--	6,760	--	--	6,760
Total	60	--	6,780	60	--	6,780
Refined zinc:						
Australia	26,000	--	47,700	29,200	--	103,000
Belgium	--	--	--	2,190	14,200	17,200
Canada	506,000	30,700	336,000	506,000	30,700	336,000
China	5	3	11	405	3	989
India	3,020	--	7,500	3,020	--	7,500
Japan	--	--	--	397	2	225
Korea, Republic of	6	--	2,010	9,310	--	3,550
Mexico	88,800	7,640	72,400	88,800	7,640	72,400
Namibia	--	--	--	123	--	450
Netherlands	--	--	--	346	--	2,230
Peru	66,600	4,450	47,100	66,600	4,450	47,100
Poland	294	--	292	294	--	292
Spain	--	--	--	6,190	1,100	28,100
Taiwan	31	--	15	31	--	15
Other (6 countries)	5	--	363	5	--	363
Total	691,000	42,700	513,000	713,000	58,000	619,000
Oxide:						
Australia	97	--	74	97	--	74
Belgium	12	--	3	12	--	3
Canada	69,100	5,370	54,500	69,100	5,370	54,500
China	428	47	202	427	47	202
France	31	--	11	31	--	11
Germany	2,490	264	2,410	2,490	264	2,410
India	101	--	50	101	--	50
Indonesia	27	--	--	27	--	--
Israel	34	--	--	34	--	--
Japan	352	39	418	352	39	418
Korea, Republic of	14	--	16	14	--	16
Mexico	35,100	3,580	30,400	35,100	3,580	30,400
Netherlands	5,390	625	7,500	5,390	625	7,500
Peru	9,180	28	643	9,180	28	643
Russia	11	--	--	11	--	--
Switzerland	8	--	--	8	--	--
Taiwan	10	--	--	10	--	--
Thailand	14	--	2	14	--	2
United Kingdom	273	--	182	273	--	182
Other (4 countries)	4	--	9	4	--	9
Total	123,000	9,950	96,400	123,000	9,950	96,400

-- Zero.

¹Data are rounded to no more than three significant digits; may not add to totals shown.

²May include revisions to previously published data.

³Less than ½ unit.

Source: U.S. Census Bureau.

TABLE 5
U.S. EXPORTS OF ZINC¹

(Gross weight, unless otherwise specified)

Material	2017					
	2016		October		January–October ²	
	Quantity (metric tons)	Value (thousands)	Quantity (metric tons)	Value (thousands)	Quantity (metric tons)	Value (thousands)
Ore and concentrate (zinc content)	597,000	\$938,000	63,300	\$131,000	620,000	\$1,250,000
Unwrought:						
Refined zinc	46,900	95,300	1,480	3,680	27,300	60,900
Zinc alloys	16,200	40,900	1,620	5,020	12,200	35,400
Wrought:						
Bars, rods, profiles, wire	8,100	20,200	781	2,010	7,590	18,800
Plates, sheets, strip, foil	6,960	23,900	547	2,300	6,490	25,000
Ash and residues:						
Hard zinc spelter	12,100	18,200	770	1,720	6,760	13,000
Other (zinc content)	22,800	29,900	1,270	2,810	15,700	25,000
Other:						
Powders, flakes, dust	12,700	39,600	952	3,230	11,000	34,400
Waste and scrap	30,100	37,800	3,700	4,230	24,600	31,500
Chemicals:						
Lithopone	1,260	7,160	21	168	709	4,250
Zinc oxide	55,300	56,300	6,750	9,450	50,600	67,000
Zinc chloride	856	1,130	37	38	250	433
Zinc sulfate	588	850	24	61	565	692
Zinc sulfide	1,040	14,500	89	1,420	518	13,600

¹Data are rounded to no more than three significant digits.

²May include revisions to previously published data.

Source: U.S. Census Bureau.

TABLE 6
AVERAGE PRICES FOR SPECIAL HIGH GRADE ZINC

Period	North American ¹	London Metal Exchange cash ²	
	¢/lb.	¢/lb.	\$/t
2016:			
October	111.22	104.95	2,313.83
November	122.77	116.50	2,568.41
December	127.19	121.17	2,671.34
January–December	101.37	94.82	2,090.34
2017:			
January	129.20	123.05	2,712.68
February	135.60	129.18	2,848.04
March	134.06	126.16	2,781.33
April	127.75	119.41	2,632.50
May	126.03	117.47	2,589.77
June	125.18	116.64	2,571.53
July	134.83	126.31	2,784.63
August	143.91	135.24	2,981.44
September	150.01	141.48	3,119.18
October	157.00	148.48	3,273.52
January–October	136.36	128.34	2,829.46

¹Platts Metals Week North American price. Based on the London Metal Exchange cash price plus premium.

²Average of the cash buyer price and the cash seller and settlement price.

Source: Platts Metals Week.

TABLE 7
LONDON METAL EXCHANGE (LME) STOCKS OF SPECIAL HIGH GRADE ZINC, END OF PERIOD

(Metric tons)

Period	United States		Europe	Other	Total LME
	New Orleans, LA	Total			
2016:					
October	395,225	395,225	43,550	11,950	450,725
November	390,475	390,475	39,875	11,650	442,000
December	380,125	380,125	36,750	10,975	427,850
2017:					
January	350,325	350,325	34,775	10,975	396,075
February	340,400	340,400	33,500	10,200	384,100
March	330,100	330,100	31,200	9,650	370,950
April	310,350	310,350	29,150	8,725	348,225
May	296,475	296,475	24,900	8,550	329,925
June	265,400	265,400	19,975	3,900	289,275
July	247,625	247,625	13,125	3,850	264,600
August	232,325	232,325	8,875	2,825	244,025
September	215,100	215,100	35,825	2,325	253,250
October	223,775	223,775	27,925	2,325	254,025

Source: London Metal Exchange, Ltd.