

Mineral Industry Surveys

For information, contact:

Christine L. Thomas, Zinc Commodity Specialist
 National Minerals Information Center
 U.S. Geological Survey
 989 National Center
 Reston, VA 20192
 Telephone: (703) 648-7713 Fax: (703) 648-7757
 Email: clthomas@usgs.gov

Hodan A. Fatah (Data)
 Telephone: (703) 648-4971
 Fax: (703) 648-7975
 Email: hfatah@usgs.gov

Internet: <http://minerals.usgs.gov/minerals/>

ZINC IN SEPTEMBER 2017

Domestic mine production (recoverable) of zinc in September 2017 was 61,100 metric tons (t) (tables 1, 2). Average daily mine production in September was 2,040 t, 11% less than that in August and 8% less than that in September 2016 (fig. 1).

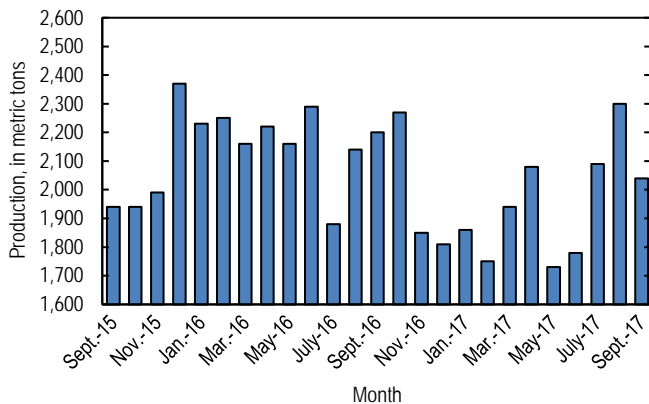


Figure 1. Average daily domestic zinc mine production (recoverable) from September 2015 through September 2017. Source: U.S. Geological Survey.

Global London Metal Exchange Ltd. (LME) stocks of Special High Grade (SHG) zinc increased by 9,225 t to 253,250 t in September, 4% more than stocks at the end of August 2017 and 42% less than stocks at the end of September 2016 (fig. 2, table 7).

The monthly average Platts Metals Week North American SHG zinc price in September 2017 was \$1.50 per pound, 4% more from that in August 2017 and 36% more than that in September 2016. The September 2017 average LME cash price for SHG zinc was \$3,119.18 per metric ton, 5% more than that in the previous month and 36% more than that in September 2016.

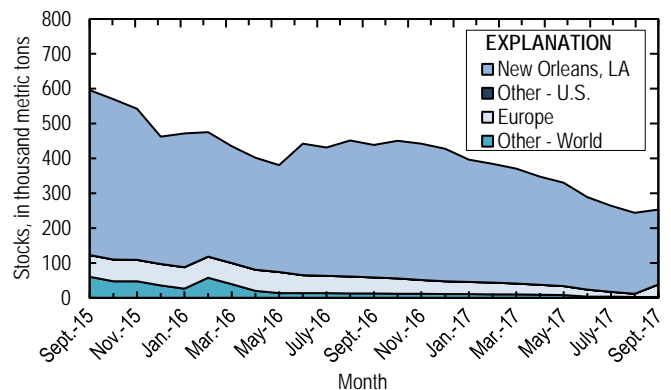


Figure 2. Global LME stocks of Special High Grade zinc, monthend, from September 2015 through September 2017. Source: London Metal Exchange Ltd.

The North American premium to the LME cash price in September averaged about 8.53 cents per pound, a slight decrease from that in August and 32% more than that in September 2016 (fig. 3, table 6).

Update

In November, Titan Mining Corp. (Canada) announced plans to reopen the Empire State Mine in January 2018. The mine, formerly named Balmat, is located in St. Lawrence County, NY. A technical report produced by Titan in mid-September 2017 indicated that the mine could produce 276,000 t of processed ore in its first year and 639,000 t in its second year (Dent, 2017).

Reference Cited

Dent, Millicent, 2017, Former Balmat zinc mine to reopen in January: American Metal Market, November 8. (Accessed November 13, 2017, via <http://www.amm.com/>.)

List services and web feed subscribers are the first to receive notification of USGS minerals information publications and data releases. For information on how to subscribe, go to <http://minerals.usgs.gov/minerals/>.

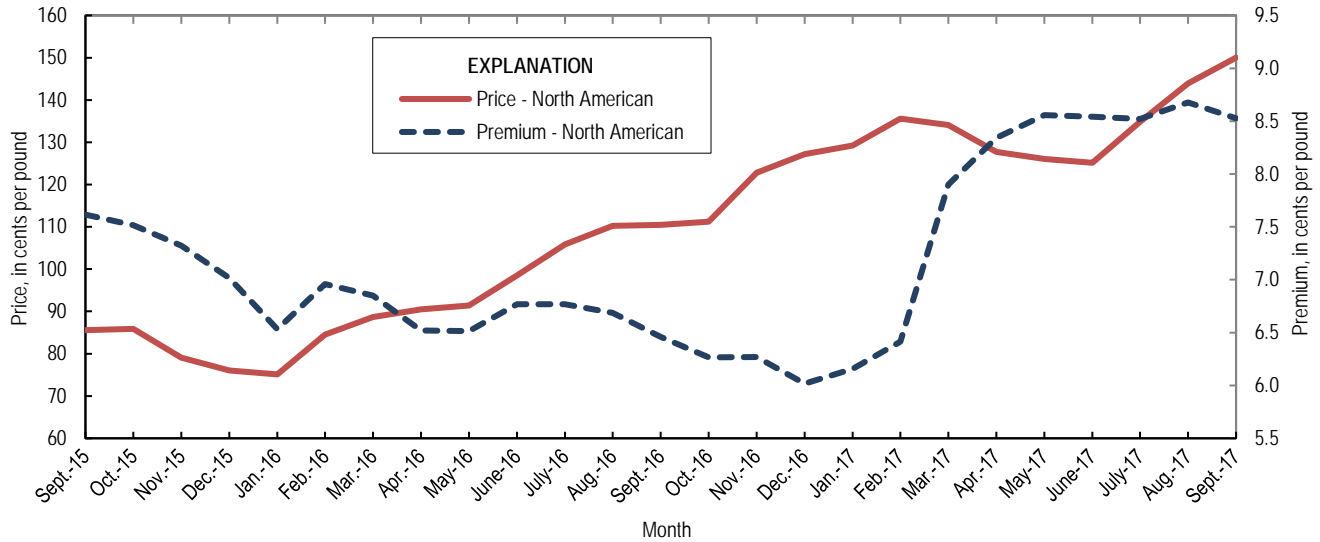


Figure 3. Average monthly North American price and premium for Special High Grade zinc from September 2015 through September 2017. Source: Platts Metals Week.

TABLE 1
SALIENT ZINC STATISTICS¹

(Metric tons, unless otherwise specified)

	2016	2017		
	January– December ^p	August	September	January– September ²
Production:				
Mine, zinc content of concentrate ³	805,000	73,800	63,200	552,000
Mine, recoverable zinc ³	778,000	71,300	61,100	534,000
Smelter, refined zinc ^e	126,000	9,920 ^r	9,920	96,300
Consumption of refined zinc, apparent ⁴	792,000	56,700 ^r	57,600	631,000
Imports for consumption:				
Ore and concentrate (zinc content)	60	--	--	6,780
Refined zinc	713,000	47,900	49,600	561,000
Exports:				
Ore and concentrate (zinc content)	597,000	160,000	136,000	557,000
Refined zinc	46,900	1,050	1,990	25,900
Price:⁵				
London Metal Exchange cash, average, dollars per metric ton	2,090.34	2,981.44	3,119.18	2,780.12
Platts Metals Week North American, average, cents per pound	101.37	143.91	150.01	134.06

^eEstimated. ^pPreliminary. ^rRevised. -- Zero.

¹Data are rounded to no more than three significant digits, except prices; may not add to totals shown.

²May include revisions to previously published data.

³Reported zinc content in both zinc and lead concentrates.

⁴Smelter production plus imports for consumption minus domestic exports.

⁵Special High Grade Zinc.

TABLE 2
MINE AND SMELTER PRODUCTION OF ZINC
IN THE UNITED STATES¹

(Metric tons)

Period	Mine ²		Smelter ^e
	Zinc content	Recoverable	
2016:			
September	68,300	66,100	9,580
October	72,700	70,300	11,300
November	57,400	55,500	11,300
December	58,100	56,200	11,300
January–December	805,000	778,000	126,000
2017:			
January	59,600	57,700	10,900
February	50,700	49,100	10,900
March	62,100	60,000	10,900
April	64,400	62,400	11,300
May	55,600	53,700	11,300
June	55,200	53,400	11,300
July	67,000	64,900	9,920 ^r
August	73,800	71,300	9,920 ^r
September	63,200	61,100	9,920
January–September	552,000	534,000	96,300

^eEstimated. ^rRevised.

¹Data are rounded to no more than three significant digits; may not add to totals shown.

²Includes the zinc content in both lead and zinc concentrates.

TABLE 3
U.S. IMPORTS FOR CONSUMPTION OF ZINC¹

(Gross weight, unless otherwise specified)

Material	2016		2017			
	Quantity (metric tons)	Value (thousands)	September		January–September ²	
			Quantity (metric tons)	Value (thousands)	Quantity (metric tons)	Value (thousands)
Ore and concentrate (zinc content)	60	\$15	--	--	6,780	\$14,900
Unwrought:						
Refined zinc	713,000	1,500,000	49,600	\$137,000	561,000	1,540,000
Zinc alloys	7,570	15,600	717	2,230	6,250	17,600
Wrought:						
Bars, rods, profiles, wire	2,740	8,370	198	826	2,090	7,920
Plates, sheets, strip, foil	3,650	12,000	397	1,860	3,040	12,200
Ash and residues:						
Hard zinc spelter	247	392	--	--	190	344
Zinc dross and skimmings	3,770	5,620	300	475	4,970	9,140
Other (zinc content)	1,180	886	58	34	1,440	807
Other:						
Powders, flakes, dust	27,800	85,400	2,440	9,270	20,900	74,200
Waste and scrap	11,300	12,800	989	1,980	8,050	14,500
Chemicals:						
Lithopone	2,670	6,310	723	410	1,810	1,500
Zinc oxide	123,000	239,000	8,990	23,100	86,400	219,000
Zinc chloride	137	1,290	7	64	137	1,190
Zinc sulfate	79,900	60,400	7,760	6,440	61,800	58,000
Zinc sulfide	579	1,600	141	264	1,620	4,650

-- Zero.

¹Data are rounded to no more than three significant digits.

²May include revisions to previously published data.

Source: U.S. Census Bureau.

TABLE 4
U.S. IMPORTS OF ZINC, BY TYPE OF MATERIAL AND COUNTRY OR LOCALITY¹

(Metric tons, gross weight, unless otherwise specified)

Material and country or locality	General imports			Imports for consumption		
	2016	2017		2016	2017	
		September	January–September ²		September	January–September ²
Ore and concentrate (zinc content):						
Canada	--	--	23	--	--	23
Japan	10	--	--	10	--	--
Korea, Republic of	50	--	--	50	--	--
Peru	--	--	6,760	--	--	6,760
Total	60	--	6,780	60	--	6,780
Refined zinc:						
Australia	26,000	--	47,700	29,200	--	103,000
Belgium	--	--	--	2,190	632	3,050
Canada	506,000	28,300	305,000	506,000	28,300	305,000
China	5	2	8	405	302	986
India	3,020	--	7,500	3,020	--	7,500
Japan	--	--	--	397	25	222
Korea, Republic of	6	--	2,010	9,310	--	3,550
Mexico	88,800	6,810	64,700	88,800	6,810	64,700
Namibia	--	--	--	123	74	450
Netherlands	--	--	--	346	28	2,230
Peru	66,600	4,650	42,600	66,600	4,650	42,600
Poland	294	--	292	294	--	292
Spain	--	--	--	6,190	8,770	27,000
Taiwan	31	--	15	31	--	15
Other (6 countries)	5	--	363	5	--	363
Total	691,000	39,800	471,000	713,000	49,600	561,000
Oxide:						
Australia	97	(3)	74	97	(3)	74
Belgium	12	--	3	12	--	3
Canada	69,100	4,810	49,100	69,100	4,810	49,100
China	428	13	154	427	13	154
France	31	--	11	31	--	11
Germany	2,490	220	2,150	2,490	220	2,150
India	101	--	50	101	--	50
Indonesia	27	--	--	27	--	--
Israel	34	--	--	34	--	--
Japan	352	40	379	352	40	379
Korea, Republic of	14	--	16	14	--	16
Mexico	35,100	3,330	26,800	35,100	3,330	26,800
Netherlands	5,390	548	6,880	5,390	548	6,880
Peru	9,180	36	615	9,180	36	615
Russia	11	--	--	11	--	--
Switzerland	8	--	--	8	--	--
Taiwan	10	--	--	10	--	--
Thailand	14	--	2	14	--	2
United Kingdom	273	--	182	273	--	182
Other (4 countries)	4	--	9	4	--	9
Total	123,000	8,990	86,400	123,000	8,990	86,400

-- Zero.

¹Data are rounded to no more than three significant digits; may not add to totals shown.

²May include revisions to previously published data.

³Less than ½ unit.

Source: U.S. Census Bureau.

TABLE 5
U.S. EXPORTS OF ZINC¹

(Gross weight, unless otherwise specified)

Material	2016		2017			
	Quantity (metric tons)	Value (thousands)	September		January–September ²	
			Quantity (metric tons)	Value (thousands)	Quantity (metric tons)	Value (thousands)
Ore and concentrate (zinc content)	597,000	\$938,000	136,000	\$317,000	557,000	\$1,120,000
Unwrought:						
Refined zinc	46,900	95,300	1,990	5,770	25,900	57,300
Zinc alloys	16,200	40,900	1,330	3,880	10,500	30,400
Wrought:						
Bars, rods, profiles, wire	8,100	20,200	728	1,800	6,810	16,700
Plates, sheets, strip, foil	6,960	23,900	544	2,090	5,940	22,700
Ash and residues:						
Hard zinc spelter	12,100	18,200	718	1,640	5,990	11,300
Other (zinc content)	22,800	29,900	2,130	3,370	14,400	22,100
Other:						
Powders, flakes, dust	12,700	39,600	794	2,670	10,000	31,100
Waste and scrap	30,100	37,800	3,480	4,630	20,900	27,300
Chemicals:						
Lithopone	1,260	7,160	82	458	687	4,080
Zinc oxide	55,300	56,300	7,450	9,990	43,800	57,600
Zinc chloride	856	1,130	80	129	213	395
Zinc sulfate	588	850	125	83	541	632
Zinc sulfide	1,040	14,500	31	1,450	429	12,200

¹Data are rounded to no more than three significant digits.

²May include revisions to previously published data.

Source: U.S. Census Bureau.

TABLE 6
AVERAGE PRICES FOR SPECIAL HIGH GRADE ZINC

Period	North	London Metal Exchange	
	American ¹	cash ²	
	¢/lb.	¢/lb.	\$/t
2016:			
September	110.44	103.98	2,292.44
October	111.22	104.95	2,313.83
November	122.77	116.50	2,568.41
December	127.19	121.17	2,671.34
January–December	101.37	94.82	2,090.34
2017:			
January	129.20	123.05	2,712.68
February	135.60	129.18	2,848.04
March	134.06	126.16	2,781.33
April	127.75	119.41	2,632.50
May	126.03	117.47	2,589.77
June	125.18	116.64	2,571.53
July	134.83	126.31	2,784.63
August	143.91	135.24	2,981.44
September	150.01	141.48	3,119.18
January–September	134.06	126.10	2,780.12

¹Platts Metals Week North American price. Based on the London Metal Exchange cash price plus premium.

²Average of the cash buyer price and the cash seller and settlement price.

Source: Platts Metals Week.

TABLE 7
LONDON METAL EXCHANGE (LME) STOCKS OF SPECIAL HIGH GRADE ZINC, END OF PERIOD

(Metric tons)

Period	United States		Europe	Other	Total LME
	New Orleans, LA	Total			
2016:					
September	380,025	380,025	46,050	12,600	438,675
October	395,225	395,225	43,550	11,950	450,725
November	390,475	390,475	39,875	11,650	442,000
December	380,125	380,125	36,750	10,975	427,850
2017:					
January	350,325	350,325	34,775	10,975	396,075
February	340,400	340,400	33,500	10,200	384,100
March	330,100	330,100	31,200	9,650	370,950
April	310,350	310,350	29,150	8,725	348,225
May	296,475	296,475	24,900	8,550	329,925
June	265,400	265,400	19,975	3,900	289,275
July	247,625	247,625	13,125	3,850	264,600
August	232,325	232,325	8,875	2,825	244,025
September	215,100	215,100	35,825	2,325	253,250

Source: London Metal Exchange, Ltd.