

Mineral Industry Surveys

For information, contact:

Christine L. Thomas, Zinc Commodity Specialist
 National Minerals Information Center
 U.S. Geological Survey
 989 National Center
 Reston, VA 20192
 Telephone: (703) 648-7713 Fax: (703) 648-7757
 Email: clthomas@usgs.gov

Hodan A. Fatah (Data)
 Telephone: (703) 648-4971
 Fax: (703) 648-7975
 Email: hfatah@usgs.gov

Internet: <http://minerals.usgs.gov/minerals/>

ZINC IN AUGUST 2017

Domestic mine production (recoverable) of zinc in August 2017 was 71,300 metric tons (t) (table 2). Average daily mine production in August was 2,300 t, 10% more than that in July and 8% more than that in August 2016 (fig. 1).

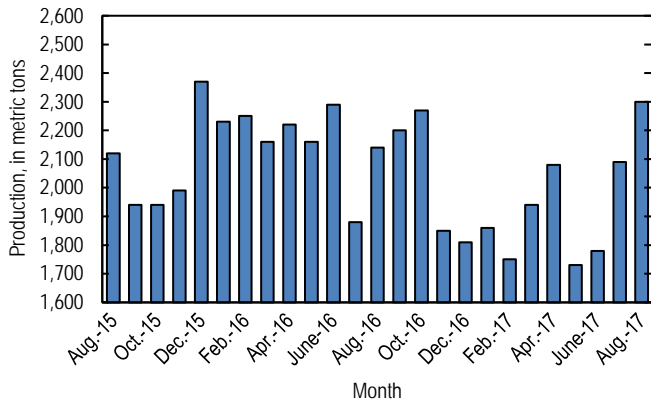


Figure 1. Average daily domestic zinc mine production (recoverable) from August 2015 through August 2017. Source: U.S. Geological Survey.

Global London Metal Exchange Ltd. (LME) stocks of Special High Grade (SHG) zinc decreased by 20,575 t to 244,025 t in August, 8% less than stocks at the end of July 2017 and 46% less than stocks at the end of August 2016 (fig. 2, table 7).

The monthly average Platts Metals Week North American SHG zinc price in August 2017 was \$1.44 per pound, 7% more from that in July 2017 and 31% more than that in August 2016. The August 2017 average LME cash price for SHG zinc was \$2,981.44 per metric ton, 7% more than that in the previous month and 31% more than that in August 2016.

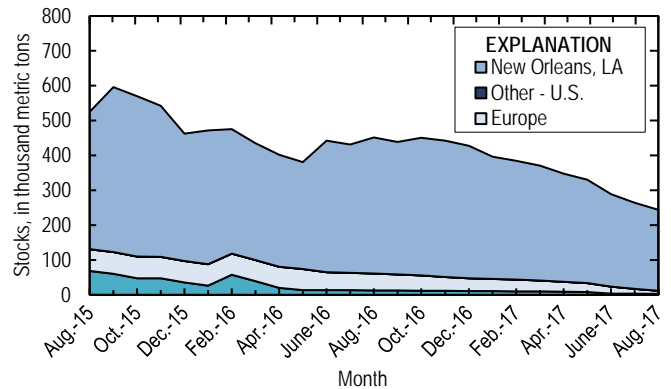


Figure 2. Global LME stocks of Special High Grade zinc, monthend, from August 2015 through August 2017. Source: London Metal Exchange Ltd.

The North American premium to the LME cash price in August averaged about 8.68 cents per pound, a slight increase from that in July and 30% more than that in August 2016 (fig. 3, table 6).

Update

Zinc inventory levels in LME-approved warehouses in New Orleans, LA, continued to decrease through September. As of September 27, 219,500 t of zinc stocks were in New Orleans, down from 276,825 t on June 21 (Dent, 2017).

Reference Cited

Dent, Millicent, 2017, Zinc premium flat on muted demand, high LME: American Metal Market, September 27. (Accessed October 11, 2017, via <http://www.amm.com/>.)

List services and web feed subscribers are the first to receive notification of USGS minerals information publications and data releases. For information on how to subscribe, go to <http://minerals.usgs.gov/minerals/>.

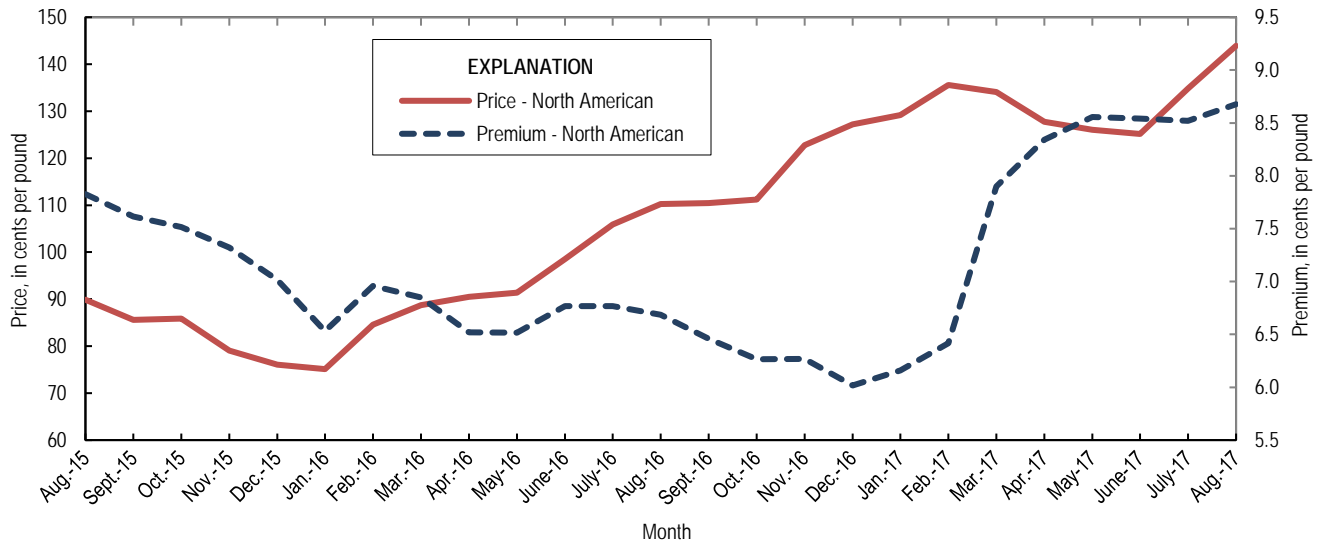


Figure 3. Average monthly North American price and premium for Special High Grade zinc from August 2015 through August 2017. Source: Platts Metals Week.

TABLE 1
SALIENT ZINC STATISTICS¹

(Metric tons, unless otherwise specified)

	2016	2017		
	January– December ^p	July	August	January– August ²
Production:				
Mine, zinc content of concentrate ³	805,000	67,000	73,800	489,000
Mine, recoverable zinc ³	778,000	64,900	71,300	472,000
Smelter, refined zinc ^e	126,000	11,300	11,300	89,000
Consumption of refined zinc, apparent ⁴	792,000	52,100	58,100	576,000
Imports for consumption:				
Ore and concentrate (zinc content)	60	6,750	--	6,780
Refined zinc	713,000	45,100	47,900	511,000
Exports:				
Ore and concentrate (zinc content)	597,000	173,000	160,000	421,000
Refined zinc	46,900	4,210	1,050	23,900
Price:⁵				
London Metal Exchange cash, average, dollars per metric ton	2,090.34	2,784.63	2,981.44	2,737.74
Platts Metals Week North American, average, cents per pound	101.37	134.83	143.91	132.07

^eEstimated. ^pPreliminary. -- Zero.

¹Data are rounded to no more than three significant digits, except prices; may not add to totals shown.

²May include revisions to previously published data.

³Reported zinc content in both zinc and lead concentrates.

⁴Smelter production plus imports for consumption minus domestic exports.

⁵Special High Grade Zinc.

TABLE 2
MINE AND SMELTER PRODUCTION OF ZINC
IN THE UNITED STATES¹

(Metric tons)

Period	Mine ²		
	Zinc content	Recoverable	Smelter ^e
2016:			
August	68,500	66,300	9,580
September	68,300	66,100	9,580
October	72,700	70,300	11,300
November	57,400	55,500	11,300
December	58,100	56,200	11,300
January–December	805,000	778,000	126,000
2017:			
January	59,600	57,700	10,900
February	50,700	49,100	10,900
March	62,100	60,000	10,900
April	64,400	62,400	11,300
May	55,600	53,700	11,300
June	55,200	53,400	11,300
July	67,000	64,900	11,300
August	73,800	71,300	11,300
January–August	489,000	472,000	89,000

^eEstimated.

¹Data are rounded to no more than three significant digits; may not add to totals shown.

²Includes the zinc content in both lead and zinc concentrates.

TABLE 3
U.S. IMPORTS FOR CONSUMPTION OF ZINC¹

(Gross weight, unless otherwise specified)

Material	2016		2017			
	Quantity (metric tons)	Value (thousands)	August		January–August ²	
			Quantity (metric tons)	Value (thousands)	Quantity (metric tons)	Value (thousands)
Ore and concentrate (zinc content)	60	\$15	--	--	6,780	\$14,900
Unwrought:						
Refined zinc	713,000	1,500,000	47,900	\$137,000	511,000	1,400,000
Zinc alloys	7,570	15,600	309	935	5,530	15,400
Wrought:						
Bars, rods, profiles, wire	2,740	8,370	269	1,050	1,890	7,090
Plates, sheets, strip, foil	3,650	12,000	544	2,130	2,650	10,300
Ash and residues:						
Hard zinc spelter	247	392	--	--	190	344
Zinc dross and skimmings	3,770	5,620	644	1,220	4,670	8,670
Other (zinc content)	1,180	886	262	152	1,380	773
Other:						
Powders, flakes, dust	27,800	85,400	2,180	7,730	18,500	64,900
Waste and scrap	11,300	12,800	1,180	1,770	7,060	12,500
Chemicals:						
Lithopone	2,670	6,310	38	202	1,090	1,090
Zinc oxide	123,000	239,000	9,760	24,900	77,500	196,000
Zinc chloride	137	1,290	35	314	130	1,120
Zinc sulfate	79,900	60,400	7,250	7,470	54,000	51,600
Zinc sulfide	579	1,600	256	729	1,480	4,380

-- Zero.

¹Data are rounded to no more than three significant digits.

²May include revisions to previously published data.

Source: U.S. Census Bureau.

TABLE 4
U.S. IMPORTS OF ZINC, BY TYPE OF MATERIAL AND COUNTRY OR LOCALITY¹

(Metric tons, gross weight, unless otherwise specified)

Material and country or locality	General imports			Imports for consumption		
	2016	2017		2016	2017	
		August	January–August ²		August	January–August ²
Ore and concentrate (zinc content):						
Canada	--	--	23	--	--	23
Japan	10	--	--	10	--	--
Korea, Republic of	50	--	--	50	--	--
Peru	--	--	6,760	--	--	6,760
Total	60	--	6,780	60	--	6,780
Refined zinc:						
Australia	26,000	--	47,700	29,200	--	103,000
Belgium	--	--	--	2,190	554	2,420
Canada	506,000	31,400	277,000	506,000	31,400	277,000
China	5	--	6	405	--	684
India	3,020	--	7,500	3,020	--	7,500
Japan	--	--	--	397	198	198
Korea, Republic of	6	--	2,010	9,310	--	3,550
Mexico	88,800	6,790	57,900	88,800	6,790	57,900
Namibia	--	--	--	123	--	375
Netherlands	--	--	--	346	--	2,200
Peru	66,600	5,280	38,000	66,600	5,280	38,000
Poland	294	--	292	294	--	292
Spain	--	--	--	6,190	3,520	18,300
Taiwan	31	--	15	31	--	15
Other (6 countries)	5	108	363	5	108	363
Total	691,000	43,600	431,000	713,000	47,900	511,000
Oxide:						
Australia	97	20	74	97	20	74
Belgium	12	1	3	12	1	3
Canada	69,100	5,180	44,300	69,100	5,180	44,300
China	428	9	141	427	9	141
France	31	7	11	31	7	11
Germany	2,490	289	1,930	2,490	289	1,930
India	101	--	50	101	--	50
Indonesia	27	--	--	27	--	--
Israel	34	--	--	34	--	--
Japan	352	64	339	352	64	339
Korea, Republic of	14	--	16	14	--	16
Mexico	35,100	3,410	23,500	35,100	3,410	23,500
Netherlands	5,390	753	6,330	5,390	753	6,330
Peru	9,180	36	579	9,180	36	579
Russia	11	--	--	11	--	--
Switzerland	8	--	--	8	--	--
Taiwan	10	--	--	10	--	--
Thailand	14	--	2	14	--	2
United Kingdom	273	--	182	273	--	182
Other (4 countries)	4	--	9	4	--	9
Total	123,000	9,760	77,500	123,000	9,760	77,500

-- Zero.

¹Data are rounded to no more than three significant digits; may not add to totals shown.

²May include revisions to previously published data.

Source: U.S. Census Bureau.

TABLE 5
U.S. EXPORTS OF ZINC¹

(Gross weight, unless otherwise specified)

Material	2016		2017			
	Quantity (metric tons)	Value (thousands)	August		January–August ²	
			Quantity (metric tons)	Value (thousands)	Quantity (metric tons)	Value (thousands)
Ore and concentrate (zinc content)	597,000	\$938,000	160,000	\$328,000	421,000	\$800,000
Unwrought:						
Refined zinc	46,900	95,300	1,050	1,850	23,900	51,500
Zinc alloys	16,200	40,900	1,200	3,690	9,220	26,500
Wrought:						
Bars, rods, profiles, wire	8,100	20,200	1,070	2,670	6,080	15,000
Plates, sheets, strip, foil	6,960	23,900	621	2,520	5,400	20,600
Ash and residues:						
Hard zinc spelter	12,100	18,200	814	1,550	5,270	9,670
Other (zinc content)	22,800	29,900	1,990	2,770	12,300	18,800
Other:						
Powders, flakes, dust	12,700	39,600	1,180	3,660	9,220	28,500
Waste and scrap	30,100	37,800	2,130	2,700	17,400	22,700
Chemicals:						
Lithopone	1,260	7,160	84	524	606	3,630
Zinc oxide	55,300	56,300	4,430	5,920	36,400	47,600
Zinc chloride	856	1,130	8	15	134	265
Zinc sulfate	588	850	34	42	416	548
Zinc sulfide	1,040	14,500	65	1,550	398	10,700

¹Data are rounded to no more than three significant digits.

²May include revisions to previously published data.

Source: U.S. Census Bureau.

TABLE 6
AVERAGE PRICES FOR SPECIAL HIGH GRADE ZINC

Period	North	London Metal Exchange	
	American ¹ ¢/lb.	cash ² ¢/lb. \$/t	
2016:			
August	110.22	103.53	2,282.40
September	110.44	103.98	2,292.44
October	111.22	104.95	2,313.83
November	122.77	116.50	2,568.41
December	127.19	121.17	2,671.34
January–December	101.37	94.82	2,090.34
2017:			
January	129.20	123.05	2,712.68
February	135.60	129.18	2,848.04
March	134.06	126.16	2,781.33
April	127.75	119.41	2,632.50
May	126.03	117.47	2,589.77
June	125.18	116.64	2,571.53
July	134.83	126.31	2,784.63
August	143.91	135.24	2,981.44
January–August	132.07	124.18	2,737.74

¹Platts Metals Week North American price. Based on the London Metal Exchange cash price plus premium.

²Average of the cash buyer price and the cash seller and settlement price.

Source: Platts Metals Week.

TABLE 7
LONDON METAL EXCHANGE (LME) STOCKS OF SPECIAL HIGH GRADE ZINC, END OF PERIOD

(Metric tons)

Period	United States		Europe	Other	Total LME
	New Orleans, LA	Total			
2016:					
August	390,000	390,000	48,250	12,850	451,100
September	380,025	380,025	46,050	12,600	438,675
October	395,225	395,225	43,550	11,950	450,725
November	390,475	390,475	39,875	11,650	442,000
December	380,125	380,125	36,750	10,975	427,850
2017:					
January	350,325	350,325	34,775	10,975	396,075
February	340,400	340,400	33,500	10,200	384,100
March	330,100	330,100	31,200	9,650	370,950
April	310,350	310,350	29,150	8,725	348,225
May	296,475	296,475	24,900	8,550	329,925
June	265,400	265,400	19,975	3,900	289,275
July	247,625	247,625	13,125	3,850	264,600
August	232,325	232,325	8,875	2,825	244,025

Source: London Metal Exchange, Ltd.