

Mineral Industry Surveys

For information, contact:

Mark Brininstool, Copper Commodity Specialist
 National Minerals Information Center
 U.S. Geological Survey
 989 National Center
 Reston, VA 20192
 Telephone: (703) 648-7798, Fax: (703) 648-7757
 Email: mbrininstool@usgs.gov

Samir Hakim (Data)
 Telephone: (703) 648-7955
 Fax: (703) 648-7975
 Email: shakim@usgs.gov

Internet: <http://minerals.usgs.gov/minerals/>

COPPER IN JULY 2016

The U.S. average daily mine production of recoverable copper in July 2016 decreased by 6% compared with that in June 2016 and was 10% less than that in July 2015 owing to decreased production at mines in Arizona and Utah. Total monthly mine production in July 2016 decreased by 3% and total monthly refinery production increased by 3% compared with those in June 2016 (fig. 1, table 1).

Average daily smelter production in July 2016 decreased by 29% compared with that in June 2016 and average daily electrolytic refinery production decreased by 4%. Smelter production decreased by 21% and electrolytic refinery production increased slightly in July 2016 compared with those in July 2015. The decreased smelter production was owing to a scheduled maintenance shutdown at one smelter (tables 3, 4).

Total refined copper stocks in the United States at the end of July increased by 6% compared with those at the end of June, owing to across the board increases in reported stocks. Total refined stocks at the end of July 2016 were 5% less than those at the end of July 2015 (table 10).

The average July 2016 COMEX spot copper price increased by 5% to \$2.21 per pound from the average price in June but was 11% less than the average price in June 2015 (table 11). The average July 2016 New York dealers' number 2 scrap price increased by 5% to \$1.57 per pound from the average price in June and was 21% less than the average price in July 2015 (table 12).

Industry News

On May 31, Freeport-McMoRan Copper & Gold Inc. announced that it had completed the sale of a 13% ownership interest in the Morenci Mine in Arizona to Sumitomo Metal Mining Co., Ltd. for \$1.0 billion in cash. After the sale, Freeport had a 72% ownership interest; Sumitomo Metal Mining Arizona Inc., 15%; and Sumitomo Metal Mining Co., Ltd., 13% (Freeport-McMoRan Copper & Gold Inc., 2016).

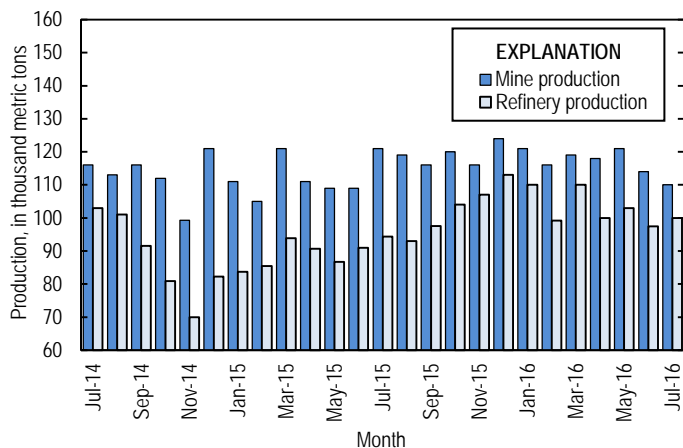


Figure 1. Monthly domestic copper mine production (recoverable) and refinery production from July 2014 through July 2016. Source: U.S. Geological Survey.

List services and Web feed subscribers are the first to receive notification of USGS minerals information publications and data releases. For information on how to subscribe, go to <http://minerals.usgs.gov/minerals/>.

Reference Cited

Freeport-McMoRan Copper & Gold Inc., 2016, Freeport-McMoRan completes sale of 13% interest in Morenci Mine for \$1.0 billion in cash: Phoenix, AZ, Freeport-McMoRan Copper & Gold Inc. news release, May 31. (Accessed September 13, 2016, at <http://investors.fcx.com/investor-center/news-releases/news-release-details/2016/Freeport-McMoRan-Completes-Sale-of-13-Interest-in-Morenci-Mine-for-10-Billion-in-Cash/default.aspx>.)

TABLE 1
SALIENT STATISTICS OF THE COPPER INDUSTRY IN THE UNITED STATES¹

(Metric tons, unless otherwise specified)

	Source table ²	2015 ^P	2016			
			May	June	July	January– July
Production:						
Primary:						
Mine, recoverable	(2)	1,380,000	121,000 [†]	114,000 [†]	110,000	819,000
Smelter, total	(3)	527,000	51,900 [†]	45,400 [†]	33,100	311,000
Refinery:						
Electrolytic, domestic and foreign	(4)	503,000	48,200	43,600	43,200	330,000
Electrowon	(4)	589,000	51,700	50,700	54,000	360,000
Total	(4)	1,090,000	99,900	94,200 [†]	97,200	690,000
Secondary recoverable copper:						
Refineries	(5)	48,800	3,180	3,260	3,280	29,200
Ingot makers ³	(5)	56,300	4,690	4,690	4,690	32,800
Brass and wire-rod mills	(5)	606,000	53,000	52,600	50,800	365,000
Foundries, etc. ³	(5)	50,200	4,190	4,190	4,190	29,300
Consumption:						
Apparent	(8)	1,810,000	151,000	180,000	162,000	1,120,000
Refined (reported)	(7)	1,800,000	147,000	150,000	144,000	1,040,000
Purchased copper-base scrap	(9)	907,000	76,700	76,400	74,600	535,000
Stocks at end of period:						
Total refined	(10)	210,000	165,000	149,000	157,000	157,000
Blister, etc.	(10)	13,900	16,100	19,500	13,500	13,500
Prices, U.S. producers cathode (cents per pound) ⁴	(11)	256.150	216.831	215.520	226.296	218.426
Imports:⁵						
Ore and concentrate ⁶	(13)	301	--	30	39	75
Refined	(13)	686,000	51,800	55,100	61,100	389,000
Exports:⁵						
Ore and concentrate ⁶	(14)	392,000	24,100	26,500	31,400	192,000
Refined	(14)	86,200 [†]	22,000	5,600	6,510	91,800

^PPreliminary. [†]Revised. -- Zero.

¹Data are rounded to no more than three significant digits, except prices; may not add to totals shown.

²Numbers in parentheses refer to the tables where these data are located.

³Monthly data estimated based on 2014 monthly average.

⁴Source: Platts Metals Week.

⁵Source: U.S. Census Bureau.

⁶Copper content.

TABLE 2
MINE PRODUCTION OF RECOVERABLE COPPER IN THE UNITED STATES¹

(Metric tons)

Period	Recoverable copper			Contained copper		
	Arizona	Others ²	Total	Electrowon	Concentrates ³	Total
2015: ^p						
July	81,300	40,200	121,000	48,300	76,100	124,000
August	84,100	35,300	119,000	52,400	69,800	122,000
September	82,400	33,400	116,000	54,500	65,800	120,000
October	85,700	34,400	120,000	55,100	67,500	123,000
November	83,200	33,100	116,000	54,000	64,900	119,000
December	87,800	36,000	124,000	55,900	70,500	126,000
January–December	963,000	419,000	1,380,000	589,000	827,000	1,420,000
2016:						
January	83,900	37,100	121,000	54,500	69,700	124,000
February	77,000 ^r	38,900	116,000	48,500	70,300 ^r	119,000
March	79,400 ^r	40,100	119,000 ^r	51,400 ^r	70,700 ^r	122,000 ^r
April	78,800 ^r	39,600	118,000 ^r	49,700 ^r	71,400 ^r	121,000 ^r
May	81,300 ^r	39,400	121,000 ^r	51,700	71,700 ^r	123,000
June	76,300 ^r	37,200	114,000 ^r	50,700	65,400 ^r	116,000 ^r
July	74,600	35,100	110,000	54,000	60,900	115,000
January–July	551,000	267,000	819,000	360,000	480,000	841,000

^pPreliminary. ^rRevised.

¹Data are rounded to no more than three significant digits; may not add to totals shown.

²Includes production from Idaho, Michigan, Missouri, Montana, Nevada, New Mexico, and Utah.

³Includes copper content of precipitates and other metal concentrates.

TABLE 3
COPPER PRODUCED AT SMELTERS IN
THE UNITED STATES^{1,2}

(Metric tons, copper content)

Period	Anode production
2015: ^p	
July	41,800
August	40,300
September	39,600
October	48,700
November	46,500
December	55,100
January–December	527,000
2016:	
January	45,600
February	46,100
March	41,400
April	47,300
May	51,900 ^r
June	45,400 ^r
July	33,100
January–July	311,000

^pPreliminary. ^rRevised.

¹Includes blister and copper anode from primary or secondary sources.

²Data are rounded to no more than three significant digits; may not add to total shown.

TABLE 4
PRODUCTION OF REFINED COPPER, BY SOURCE AND METHOD OF RECOVERY¹

(Metric tons)

Period	Primary materials			Scrap	Total refined
	Electrolytically refined ²	Electrowon	Total		
2015: ^P					
July	42,500	48,300	90,900	3,570	94,400
August	36,700	52,400	89,100	3,890	93,000
September	38,900	54,500	93,400	4,200	97,600
October	44,200	55,100	99,400	5,010	104,000
November	49,000	54,000	103,000	4,250	107,000
December	53,000	55,900	109,000	4,050	113,000
January–December	503,000	589,000	1,090,000	48,800	1,140,000
2016:					
January	51,100	54,500	106,000	4,250	110,000
February	43,500	48,500	92,000	7,190	99,200
March	53,300	51,500	105,000	4,900	110,000
April	47,100	49,600	96,700	3,200	99,900
May	48,200	51,700	99,900	3,180	103,000
June	43,600	50,700	94,200 ^r	3,260	97,500
July	43,200	54,000	97,200	3,280	100,000
January–July	330,000	360,000	690,000	29,200	720,000

^PPreliminary. ^rRevised.

¹Data are rounded to no more than three significant digits; may not add to totals shown.

²From domestic and foreign source materials.

TABLE 5
COPPER RECOVERABLE IN UNALLOYED AND ALLOYED FORM FROM PURCHASED COPPER-BASE SCRAP¹

(Metric tons, copper content)

Period	Refineries ²		Ingot makers ³		Brass and wire-rod mills		Foundries, etc. ³		Total ⁴
	New scrap	Old scrap	New scrap	Old scrap	New scrap	Old scrap	New scrap	Old scrap	
2015: ^P									
July	1,180	2,390	826	3,860	47,400	3,170	3,290	896	63,000
August	1,480	2,400	826	3,860	46,700	3,220	3,290	896	62,700
September	1,710	2,490	826	3,860	48,700	3,060	3,290	896	64,800
October	1,710	3,310	826	3,860	47,000	2,910	3,290	896	63,800
November	1,640	2,610	826	3,860	46,800	2,780	3,290	896	62,700
December	1,640	2,410	826	3,860	46,800	2,490	3,290	896	62,200
January–December	17,900	30,900	9,910	46,400	569,000	37,100	39,500	10,800	758,000
2016:									
January	1,640	2,620	826	3,860	49,000	3,430	3,290	896	65,500
February	1,640	5,550	826	3,860	48,400	3,190	3,290	896	67,600
March	1,660	3,240	826	3,860	48,700	3,150	3,290	896	65,600
April	1,630	1,570	826	3,860	50,500	2,790	3,290	896	65,300
May	1,610	1,570	826	3,860	50,400	2,610	3,290	896	65,100
June	1,680	1,580	826	3,860	49,600	3,000	3,290	896	64,700
July	1,680	1,600	826	3,860	48,200	2,600	3,290	896	63,000
January–July	11,500	17,700	5,780	27,000	345,000	20,800	23,000	6,270	457,000

^PPreliminary.

¹Data are rounded to no more than three significant digits; may not add to totals shown.

²Electrolytically refined and fire-refined from scrap based on source of material at smelter or refinery level.

³Monthly data and 2015 cumulative data estimated based on 2014 annual data.

⁴Does not include an estimate, based on reported 2014 data, of 2,950 tons per month from new scrap and 2,530 tons per month from old scrap, of copper recovered from scrap other than copper-base.

TABLE 6
PRODUCTION, SHIPMENTS, AND STOCKS OF BRASS AND WIRE-ROD SEMIFABRICATES¹

(Metric tons, gross weight)

Period	Production		Shipments		Stocks, end of period	
	Brass mills	Wire-rod mills	Brass mills	Wire-rod mills	Brass mills	Wire-rod mills
2015: ^P						
July	72,700	112,000	72,900	110,000	28,800	29,800
August	74,100	109,000	74,200	111,000	28,700	28,100
September	74,600	108,000	74,900	106,000	28,400	30,200
October	74,200	114,000	73,500	114,000	29,100	30,300
November	72,500	95,900	72,800	100,000	28,800	25,900
December	72,700	92,200	73,100	92,200	28,400	26,000
January–December	891,000	1,320,000	891,000	1,310,000	28,400	26,000
2016:						
January	73,600	112,000	73,400	110,000	28,600	27,600
February	73,600	109,000	73,900	108,000	28,200	28,900
March	75,000	117,000	74,200	113,000	28,900	33,100
April	73,500	109,000	73,300	108,000	29,200	29,400
May	72,300	110,000	73,700	111,000	27,800	28,300
June	72,300	112,000	71,200	110,000	28,900	30,200
July	72,800	106,000	72,700	105,000	29,100	30,600
January–July	513,000	775,000	512,000	766,000	29,100	30,600

^PPreliminary.

¹Data are rounded to no more than three significant digits; may not add to totals shown.

TABLE 7
CONSUMPTION OF REFINED COPPER¹

(Metric tons)

Period and item	Brass mills	Wire-rod mills	Other plants ²	Total
2015: ^P				
July	33,800	112,000	4,690	150,000
August	35,200	109,000	4,690	149,000
September	35,500	108,000	4,690	148,000
October	34,900	113,000	4,690	152,000
November	35,300	97,500	4,690	137,000
December	35,000	95,800	4,690	135,000
January–December	422,000	1,320,000	56,200	1,800,000
2016:				
January	34,800	110,000	4,690	149,000
February	35,700	107,000	4,690	147,000
March	35,400	116,000	4,690	156,000
April	34,900	107,000	4,690	146,000
May	34,400	108,000	4,690	147,000
June	35,500	110,000	4,690	150,000
July	35,500	104,000	4,690	144,000
January–July	246,000	762,000	32,800	1,040,000

^PPreliminary.

¹Data are rounded to no more than three significant digits; may not add to totals shown.

²Monthly and 2015 cumulative consumption data by ingot makers, chemical plants, foundries, and miscellaneous manufacturers is estimated based on 2014 annual data.

TABLE 8
U.S. APPARENT CONSUMPTION OF COPPER¹

(Metric tons)

Period	Refined copper production	Copper in old scrap ²	Refined general imports ³	Refined exports ³	Stock change during period	Apparent consumption
2015: ^P						
July	90,900	12,800	77,800	5,870	(5,730)	181,000
August	89,100	12,900	45,200	6,430	19,800	121,000
September	93,400	12,800	47,100	4,490	1,590	147,000
October	99,400	13,500	49,900	6,110	2,750	154,000
November	103,000	12,700	43,500	8,690	8,210	142,000
December	109,000	12,200	44,800	7,270	12,500	146,000
January–December	1,090,000	156,000	664,000	86,500	18,200	1,810,000
2016:						
January	106,000	13,300	56,000	6,390	11,500	157,000
February	91,800	16,000	43,800	16,800	(4,810)	140,000
March	105,000	13,700	43,400	24,800	(27,900)	165,000
April	96,700	11,600	52,400	9,650	(15,500)	167,000
May	99,900	11,500	52,400	22,000	(8,810)	151,000
June	94,200	11,900	63,400	5,600	(16,400)	180,000
July	97,200	11,500	68,200	6,510	8,220	162,000
January–July	690,000	89,500	380,000	91,800	(53,700)	1,120,000

^PPreliminary.

¹Data are rounded to no more than three significant digits; may not add to totals shown.

²Includes reported monthly production of copper from old scrap of copper-base, an estimate for annual reporters, and a monthly average of copper from non-copper-base materials based on 2014 data.

³Source: U.S. Census Bureau.

TABLE 9
CONSUMPTION OF PURCHASED COPPER-BASE SCRAP¹

(Metric tons, gross weight)

Period	Smelters and refineries		Ingot makers ²		Brass and wire-rod mills ³		Foundries, etc. ²		Total scrap used
	New scrap	Old scrap	New scrap	Old scrap	New scrap	Old scrap	New scrap	Old scrap	
2015: ^P									
July	1,220	2,560	1,990	5,480	54,800	3,240	3,950	996	74,300
August	1,530	2,640	1,990	5,480	54,400	3,320	3,950	996	74,300
September	1,770	2,700	1,990	5,480	56,900	3,110	3,950	996	76,900
October	1,760	2,700	1,990	5,480	54,700	2,990	3,950	996	74,600
November	1,690	2,680	1,990	5,480	54,700	2,860	3,950	996	74,300
December	1,690	2,680	1,990	5,480	54,600	2,540	3,950	996	73,900
January–December	18,700	31,700	23,900	65,700	669,000	38,500	47,400	12,000	907,000
2016:									
January	1,690	2,680	1,990	5,480	56,900	3,520	3,950	1,020	77,200
February	1,690	2,680	1,990	5,480	56,300	3,290	3,950	1,020	76,400
March	1,710	2,830	1,990	5,480	56,600	3,230	3,950	1,020	76,800
April	1,680	1,570	1,990	5,480	58,400	2,880	3,950	1,020	77,000
May	1,660	1,570	1,990	5,480	58,400	2,690	3,950	1,020	76,700
June	1,730	1,590	1,990	5,480	57,500	3,090	3,950	1,020	76,400
July	1,730	1,590	1,990	5,480	56,200	2,670	3,950	1,020	74,600
January–July	11,900	14,500	14,000	38,300	400,000	21,400	27,700	7,140	535,000

^PPreliminary.

¹Data are rounded to no more than three significant digits; may not add to totals shown.

²Monthly data estimated from 2014 annual data.

³Consumption at brass and wire-rod mills assumed equal to receipts.

TABLE 10
COPPER STOCKS AT END OF PERIOD¹

(Metric tons)

Period	Crude copper ²	Refined copper					Total refined	
		Refineries ³	Wire-rod mills ³	Brass mills ³	Other ⁴	Comex		
2015: ^p								
July	13,200	6,340	40,500	7,630	7,560	33,800	69,800	166,000
August	14,300	8,690	41,800	7,640	7,560	33,400	86,300	185,000
September	21,200	6,630	43,300	7,320	7,560	36,400	85,800	187,000
October	17,900	9,330	35,600	7,670	7,560	48,600	81,000	190,000
November	13,500	8,120	34,000	7,360	7,560	66,000	75,000	198,000
December	13,900	12,000	36,200	7,580	7,560	63,300	83,800	210,000
2016:								
January	13,700	13,800	34,600	8,340	7,560	59,500	98,100	222,000
February	14,500	8,820	33,400	7,840	7,560	61,200	98,300	217,000
March	13,600	7,900	28,700	7,460	7,560	65,300	72,400	189,000
April	12,400	3,200	41,600	7,950	7,560	59,400	54,100	174,000
May	16,100	3,950	40,100	8,670	7,560	55,400	49,300	165,000
June	19,500	2,820	37,300	7,680	7,560	56,600	36,600	149,000
July	13,500	3,040	40,300	7,940	7,560	59,300	38,600	157,000

^pPreliminary.

¹Data are rounded to no more than three significant digits; may not add to totals shown.

²Copper content of blister and anode.

³Stocks of refined copper as reported; no estimates are made for nonrespondents.

⁴Monthly estimates based on reported and 2014 annual data, comprising stocks at ingot makers, chemical plants, foundries, and miscellaneous manufacturers.

⁵London Metal Exchange Ltd., U.S. warehouses.

TABLE 11
AVERAGE PRICE OF COPPER IN THE UNITED STATES
AND ON THE LONDON METAL EXCHANGE

(Cents per pound)

Period	U.S. producers cathode ¹	Comex first position ²	LME cash price Grade A
2015:			
July	253.270	248.220	247.490
August	238.696	233.321	230.812
September	242.557	237.057	236.200
October	242.086	236.786	236.857
November	220.663	215.538	218.070
December	213.216	208.216	209.949
Year	256.150	250.814	249.526
2016:			
January	205.695	200.945	202.406
February	212.505	207.505	208.424
March	228.409	223.159	224.394
April	223.726	218.288	220.017
May	216.831	211.143	213.544
June	215.520	209.770	210.025
July	226.296	220.733	220.235
January–July	218.426	213.078	214.149

¹Listed as "U.S. producer cathode" and sum of "Comex high grade first position" and "NY Dealer Premium Cathode."

²Listed as "Comex high grade first position."

Source: Platts Metals Week.

TABLE 12
NEW YORK AVERAGE BUYING PRICES FOR COPPER SCRAP

(Cents per pound)

Month	Brass mills No. 1 scrap	Refiners No. 2 scrap	Dealers (New York)	
			No. 2 Scrap	Red brass turnings and borings
2015:				
July	244.36	218.77	199.91	149.82
August	229.67	205.71	180.79	142.90
September	233.33	210.43	180.02	141.43
October	233.61	210.14	176.91	139.41
November	212.58	189.37	167.97	134.37
December	205.30	183.93	148.64	127.05
Year	246.13	222.45	194.49	144.62
2016:				
January	198.61	178.84	143.61	125.37
February	205.90	187.18	141.50	125.00
March	222.17	202.72	151.02	128.70
April	217.98	199.00	152.50	130.00
May	210.83	192.43	154.26	132.38
June	210.30	191.68	150.27	130.14
July	221.00	201.70	157.15	134.10
January–July	212.40	193.36	150.04	129.38

Source: American Metal Market.

TABLE 13
U.S. IMPORTS FOR CONSUMPTION OF COPPER (UNMANUFACTURED), BY CLASS¹

(Metric tons, copper content)

Country or territory	Ore and concentrate			Matte, ash, and precipitates			Blister and anodes			Refined		
	2016			2016			2016			2016		
	2015	July	January-- July	2015	July	January-- July	2015	July	January-- July	2015	July	January-- July
Belgium	--	--	--	257	--	27	--	--	--	--	--	--
Canada	98	36	36	198	1	135	2	--	1	191,000	12,600	111,000
Chile	--	--	--	--	--	--	--	--	--	358,000	34,800	192,000
China	--	--	--	3	--	2	--	--	(2)	35	1	56
Congo (Kinshasa)	--	--	--	--	--	--	--	--	--	21,400	2,110	9,860
Finland	--	--	--	--	--	--	285	--	65	42	--	59
Germany	78	--	--	24	--	--	7	(2)	(2)	2,130	130	1,290
India	--	--	3	--	--	--	--	--	--	792	1,200	1,200
Japan	--	--	--	141	48	100	3	--	1	4,010	434	2,680
Mexico	10	--	--	--	15	32	--	--	--	94,800	9,340	62,500
Netherlands	--	--	--	257	--	26	2	--	(2)	(2)	(2)	(2)
Peru	--	--	--	--	--	--	--	--	--	11,700	--	6,530
Other	115	3	36	262	2	55	99	1	56	2,370	510	2,700
Total	301	39	75	1,140	67	377	398	1	122	686,000	61,100	389,000

-- Zero.

¹Data are rounded to no more than three significant digits; may not add to totals shown.

²Less than ½ unit.

Source: U.S. Census Bureau.

TABLE 14
U.S. EXPORTS OF COPPER (UNMANUFACTURED), BY CLASS¹

(Metric tons, copper content)

Country or territory	Ore and concentrate			Matte, ash, and precipitates			Blister and anodes			Refined		
	2016			2016			2016			2016		
	2015	July	January– July	2015	July	January– July	2015	July	January– July	2015	July	January– July
Belgium	3	--	--	23	483	2,580	228	14	448	--	--	--
Canada	21,100	1,560	15,700	16,600	529	6,870	2,310	147	1,280	36,000	1,790	22,300
China	37,800	3,250	26,800	153	--	17	773	--	397	4,750 ^r	55	29,800
Germany	--	--	--	70	--	--	413	41	388	12	--	20
Hong Kong	--	--	--	--	--	--	1,650	99	653	7	--	--
Italy	--	--	--	--	--	--	230	20	208	31	--	231
Japan	9,130	--	6,000	185	16	119	39	60	62	1,000	8	155
Korea, Republic of	157	--	68	38	19	206	1,520	110	769	1,190	3	39
Mexico	321,000	26,600	143,000	--	--	--	64	2	33	42,100	4,490	38,800
Singapore	--	--	--	21	--	--	64	--	22	78	--	13
Spain	--	--	--	16	--	--	141	20	203	24	--	--
Switzerland	--	--	--	--	--	--	31	1	7	5	--	3
Taiwan	--	--	--	--	19	164	56	--	60	62	49	56
Other	2,240	5	15	231	1	553	3,400	99	821	977 ^r	115	406
Total	392,000	31,400	192,000	17,300	1,070	10,500	10,700	613	5,350	86,200 ^r	6,510	91,800

^rRevised. -- Zero.

¹Data are rounded to no more than three significant digits; may not add to totals shown.

Source: U.S. Census Bureau.

TABLE 15
U.S. COPPER SCRAP IMPORTS¹

(Metric tons, gross weight)

Country or territory	Unalloyed			Alloyed		
	2016			2016		
	2015	July	January– July	2015	July	January– July
Canada	12,800	1,180	8,080	42,300	4,260	28,900
Chile	--	--	--	392	14	109
Colombia	151	36	149	1,890	90	665
Costa Rica	426	44	211	1,310	111	663
Guatemala	138	--	--	545	21	174
Honduras	167	3	61	502	41	191
Mexico	12,400	954	7,540	30,700 ^r	2,620	18,500
Nicaragua	--	--	--	590	39	110
Other	2,390 ^r	95	920	4,880	361	3,460
Total	28,500 ^r	2,310	17,000	83,100 ^r	7,560	52,800

^rRevised. -- Zero.

¹Data are rounded to no more than three significant digits; may not add to totals shown.

Source: U.S. Census Bureau.

TABLE 16
U.S. COPPER SCRAP EXPORTS¹

(Metric tons, gross weight)

Country or territory	Unalloyed							Alloyed					
	2015	2016						2015	2016				
		No. 1		No. 2		Other			Segregated		Unsegregated		
		July	January– July	July	January– July	July	January– July		July	January– July	July	January– July	
Belgium	10,800 ^r	74	2,040	170	1,920	360	1,190	12,600	116	1,690	328	4,190	
Canada	27,600	--	--	--	--	1,630	13,400	39,500	191	2,080	3,600	26,700	
China	281,000	9,660	60,500	6,390	38,900	9,050	51,300	378,000 ^r	7,650	57,200	24,700	153,000	
Germany	30,500	1,290	9,720	519	2,000	221	1,550	13,900 ^r	19	284	498	5,900	
Hong Kong	8,720 ^r	83	1,460	88	428	294	1,530	14,100 ^r	--	394	1,340	9,940	
India	4,050 ^r	--	552	--	173	20	320	17,600	1,430	13,100	198	1,050	
Japan	6,140 ^r	53	1,830	75	621	112	1,030	11,900 ^r	130	1,240	661	3,310	
Korea, Republic of	16,500 ^r	860	6,320	118	2,120	351	2,500	12,000 ^r	392	3,700	1,160	3,880	
Mexico	723	272	804	--	32	3	57	3,490 ^r	17	746	84	171	
Netherlands	11,300	264	3,510	124	2,670	390	1,970	720	--	83	314	593	
Spain	457	19	70	--	--	--	19	10,500 ^r	40	334	776	4,160	
Taiwan	7,650 ^r	453	2,680	39	605	121	939	2,430	92	292	145	485	
Thailand	143	--	19	--	--	7	46	2,400	77	421	--	278	
Other	20,500	686	6,940	134	1,150	22	329	9,390 ^r	97	1,630	1,850	7,980	
Total	426,000	13,700	96,400	7,650	50,600	12,600	76,200	529,000	10,200	83,200	35,700	222,000	

^rRevised. -- Zero.

¹Data are rounded to no more than three significant digits; may not add to totals shown.

Source: U.S. Census Bureau.